

Closet Design Guide

If I've learned anything about people in the past twenty-five years of doing remodeling work it's that folks are very emotional about the space they live in. Especially their home's storage spaces. This is true in modest cottages and grand lakeside homes alike. An enormous level of planning and expense usually go into a kitchen or bath, but when a builder gets to the closets something short-circuits. A kitchen may be the heart of a home, but your closet is at the center of your life. It should bring order to your life in the chaos of your demanding schedule. Your closet should complement the flow of your day—from getting ready for work, putting away the laundry and dry cleaning, to getting ready for bed. So why aren't closets done right the first time by builders?

How do you feel about your closet? Don't you deserve better?

Are you ready to take control?

If your daily struggle with your closet leaves you dreaming of the perfect closet remodel, this guide will help you to get familiar with some basic closet design components. Understanding what is possible is essential to taking control and solving the problem.

The first step in planning for your new closet is to assess your wardrobe and to start to think about the way you use your closet. What do you want within your reach nearest to the door? How many pairs of shoes do you need to store? Do you hang your pants long by the cuff or folded? Think about the flow of your daily routine and how your closet layout can make your morning a pleasure to sail through. How much hanging space do you need—how many shelves?

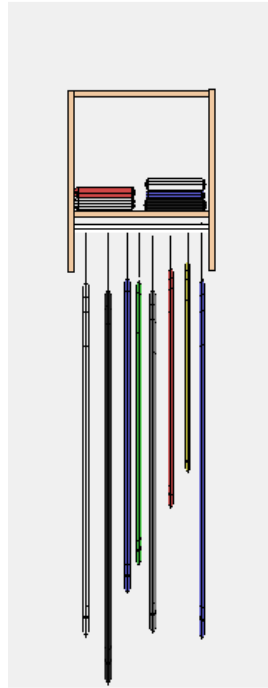
Maximize the space you have by understanding what your needs are.

The following are some common closet component layouts and specifications to help you envision the closet layout that works best for you and your lifestyle.

Hanging Clothes

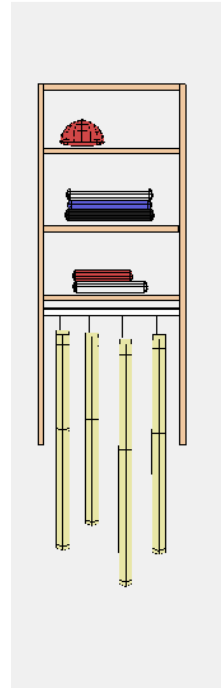
Tall hanging:

Rod height is recommended at 65" for long dresses and long coats. The rod and shelf are adjustable.



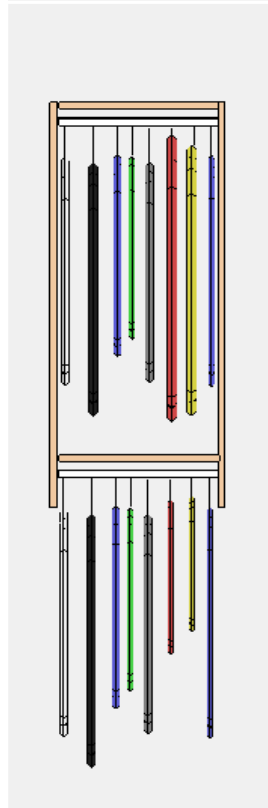
Medium hanging:

Rod height at 48"—recommended for pants hung by the cuff, long skirts, and medium length dresses. Rod and shelves are adjustable for customizing personal preferences.



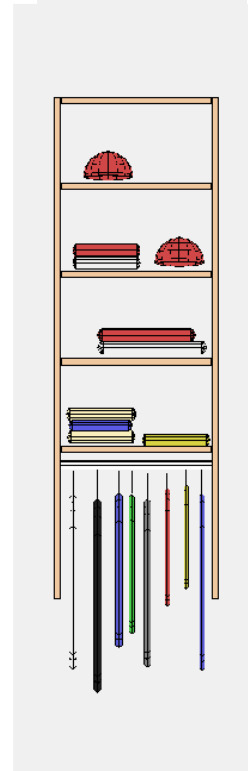
Double hanging:

Double rods add efficiency to the use of space in any closet. Rods should provide 39"—40" of clearance for hanging clothes.



Short hanging:

A great option for adding maximum shelves without giving up your hanging space. Like the double hanging section, the rod is at 39 1/4"



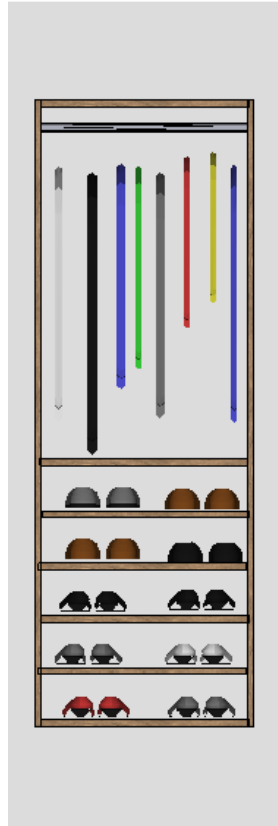
Shoe Units

← 12"—36" →



All Shoes

← 12"—42" →



Shoes With Hanging

← 12"—36" →



1/2 Shoe Shelves

Allow 7" to 9" of shelf space for a pair of women's shoes and 10" to 12" per pair of men's shoes



Slanted Shoe Shelves

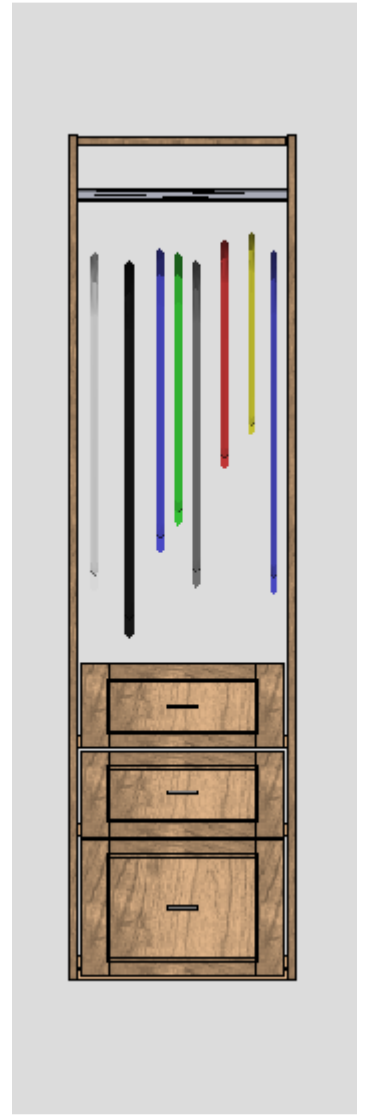
Drawer Sections



3 Drawers with Adjustable Shelves



4 Drawers with shelves



Drawers with Hanging

Shelving Sections



**Adjustable Shelves
are 14" Deep**



**Shelves with 11" Deep
Roll-Out Basket**

- Adjustability is the key to efficient storage
- Baskets or hampers added to shelving sections offers convenient options.
- Stack folded clothing no more than three items high so that stacks don't tip over and become unruly piles.
- Use Shelf Dividers to keep folded stacks neat.



Hutches



Hutches have a 19" deep drawer base with 14" deep adjustable shelves above. A hutch jewelry tray (shown above) makes a great accessory for your top drawer.

Hamper Options

Lift-out heavy-duty nylon laundry bag



Tilt-out hamper
Wire basket lifts out



Roll-out 17" deep basket



Your Finished Closet



Go nuts!

Use your imagination to create the perfect closet for *you*! A functional, beautiful space that you love to be in. A place that is like a breath of fresh air where you can find anything you need and breeze through your day without the heavy baggage of anxiety cluttering your mind.

We always welcome your questions about closet design or remodeling any space in your home. Send your questions or comments to bill@closetplace.com or call 603.569.5609.

Warm regards,
Bill Huntley
Denise D'Eri